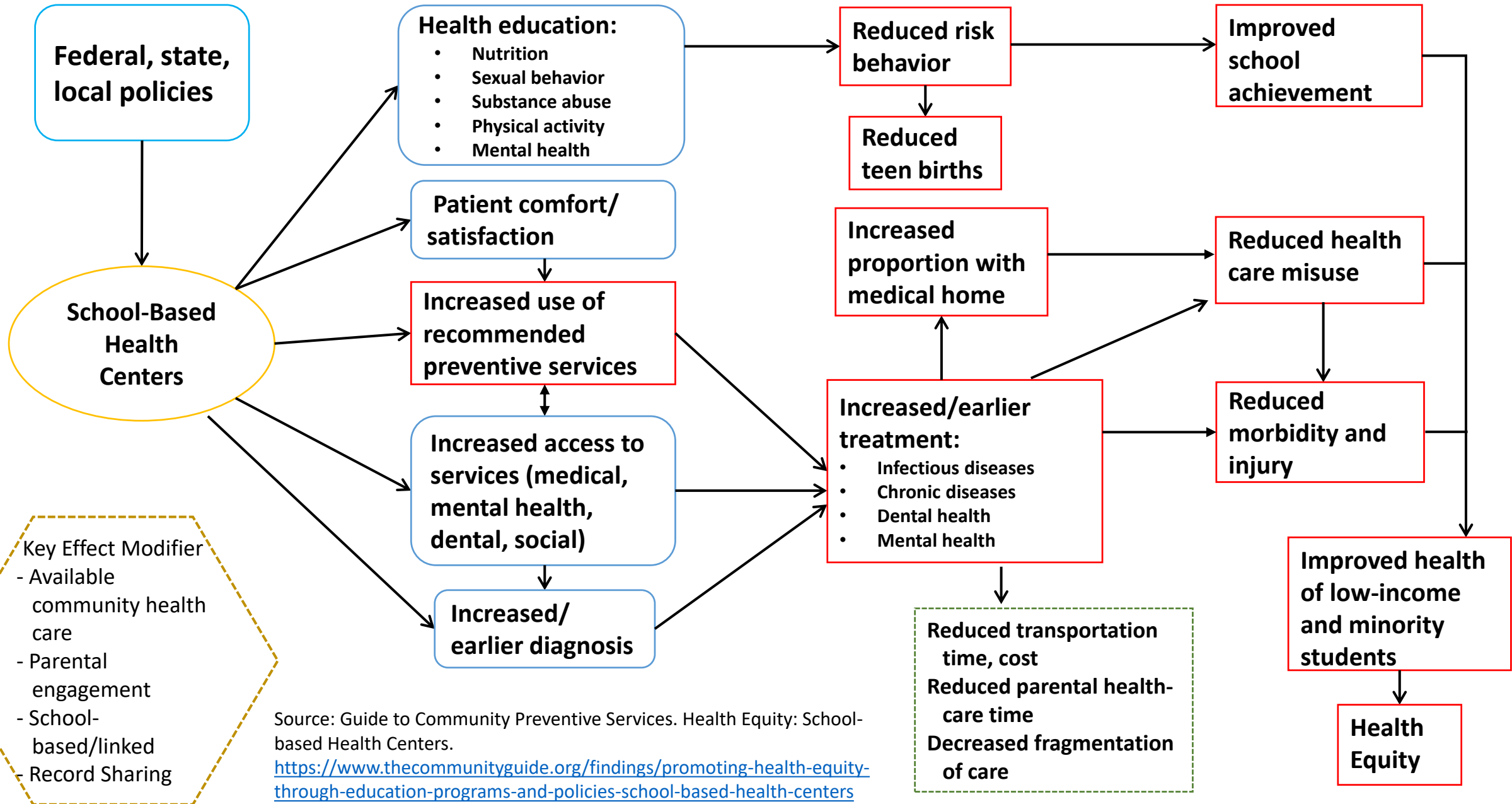











# Analytic Framework: School-Based Health Centers to Promote Health Equity

Accessible Version: <https://www.thecommunityguide.org/sites/default/files/assets/AF-SBHC-508.pdf>



Source: Guide to Community Preventive Services. Health Equity: School-based Health Centers.  
<https://www.thecommunityguide.org/findings/promoting-health-equity-through-education-programs-and-policies-school-based-health-centers>

## Legend: Icons in Community Guide Analytic Frameworks

Icon	Interpretation
	Intervention
	Recommendation outcome
	Other intermediate outcome/variable (that are not recommendation outcomes)
	Population
	Potential Effect Modifiers (affecting causal relationships)
	Potential Additional Benefits/Potential Harms
	Unidirectional block arrows are applied between intervention and population icons
	Unidirectional arrows for causal relationships
	Bidirectional arrows show feedback loops